

Hyperledger 2021 Mentorship Project

The Giving Chain

➤ *Candidate Interviews Agenda*

- Introduction
- Contributors
- Project Overview
- Awards
- Candidates
- Expectations
- Questions and Answers

Hyperledger,
Ledger Academy
And
BC Princeton
Presents

**The Giving
Chain
&
The D2R
Application**

Who We Are

Blockchain Princeton



Ledger Academy



Hyperledger Princeton



Princeton's Blockchain
and AI



Bobbi Muscara

Director Education Ledger Academy

Author of Linux Foundation Blockchain Courses for EDX

Monitor the LFS272 and LFD 272 Forums

Develop courseware for enterprise organizations.

Hyperledger

TSC Member

Chair OF THE Learning Materials Working Group

Community Spotlight: Meet Bobbi Muscara, Hyperledger Learning Materials Development Working Group Chair

By Bobbi Muscara, founder, Ledger Academy
September 5, 2019 | Blog, Community Spotlight



Blockchain and Social Responsibility



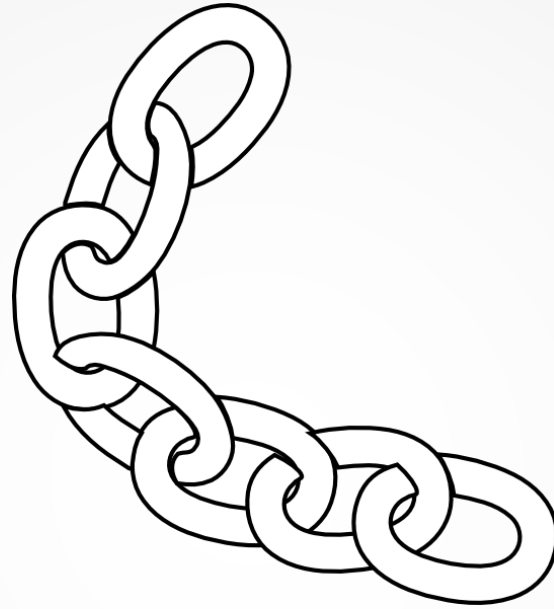
- **Philanthropy and remittances**
- **Financial empowerment**
- **Identity and land rights**
- **Governance and democracy**
- **Supply chain and environmental protections**

How We Did It

BCPrinceton Checkpoints

- Checkpoint 1: Impact Opportunity**
- Checkpoint 2: Business Model Validation**
- Checkpoint 3: Technical Architecture**
- Checkpoint 4: Business Development**
- Checkpoint 5: Product Development**
- Checkpoint 6: Final Project Delivery**

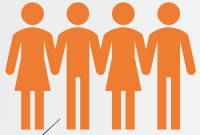
*"The Giving Chain"
The New Model for Charity Giving*



THE GIVING CHAIN

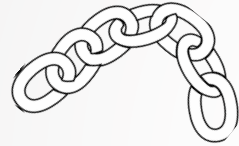
Uses blockchain technology to develop an **agile and transparent network** for connecting surplus food and supplies to communities in need, impacting the local charity giving model.

Giving Chain Business Model



Donors

Farmers
Individuals
Community / Church
Groups



Volunteers / Drivers

Pickup / Deliver:
Local volunteers
Community / Groups
Transport

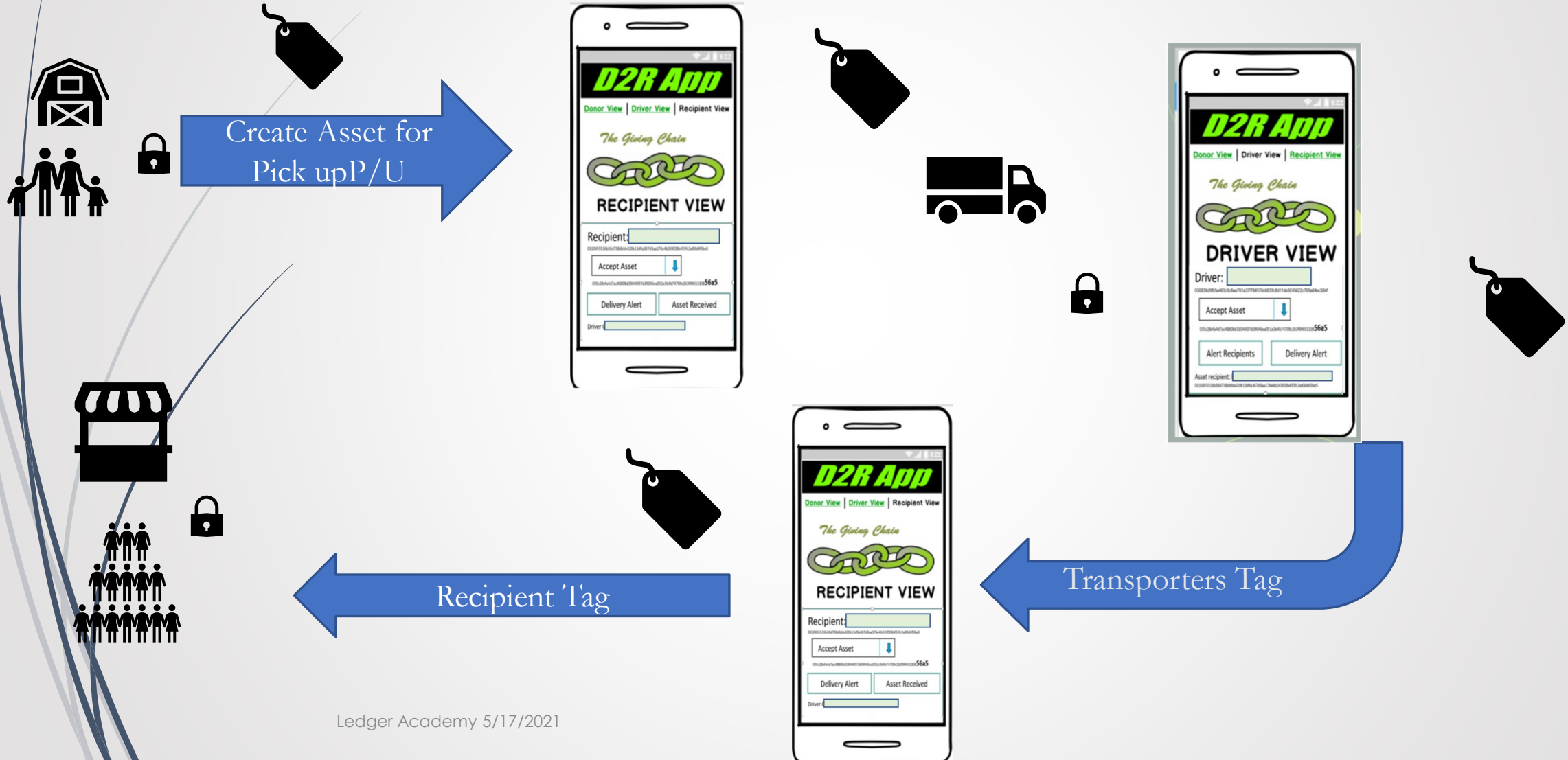


Recipients

Food Banks
Social Services Offices
Individuals (off the grid)

Giving Chain Technical Model

The D2R app



Meetups: Weekly ALL SUMM



Designing and Order Giving B



Donation Marketing Materials

Purpose:
To designate collection location.

BCPrinceton's SUMMER BLOCKCHAIN PROJECT *The Giving Chain*



Get involved for Social Good
This Summer!!

Blockchain Princeton and Ledger Academy are encouraging donations for local residence in need. Please drop off a donation and give back to your community!

Pickup Date

August 25, 2019

Donation Suggestions:

- Toothbrushes (Children's)
- Razors / Shaving Cream
- Creamy Peanut Butter
- Vegetable Soup
- Canned Chicken
- Canned Fruit
- Dog and Cat Food
- Feminine Hygiene Products
- Depends

THANK YOU SPONSORS

www.bcprinceton.com



Hyperledger



Collection Location

Summer Fund Raising Events: Collection Stations



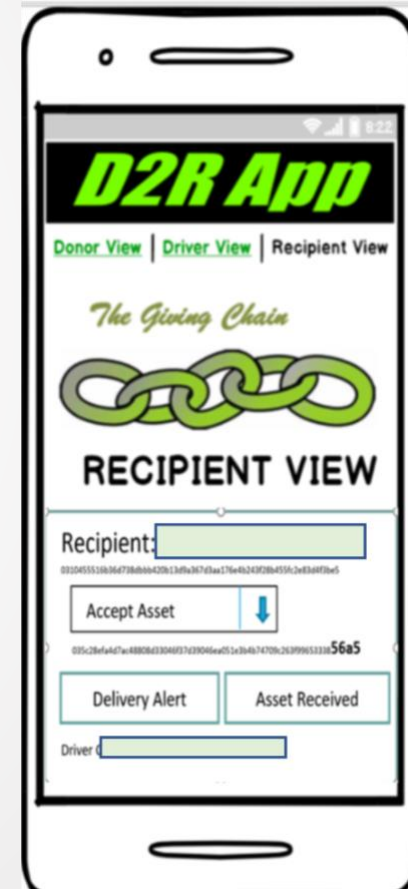
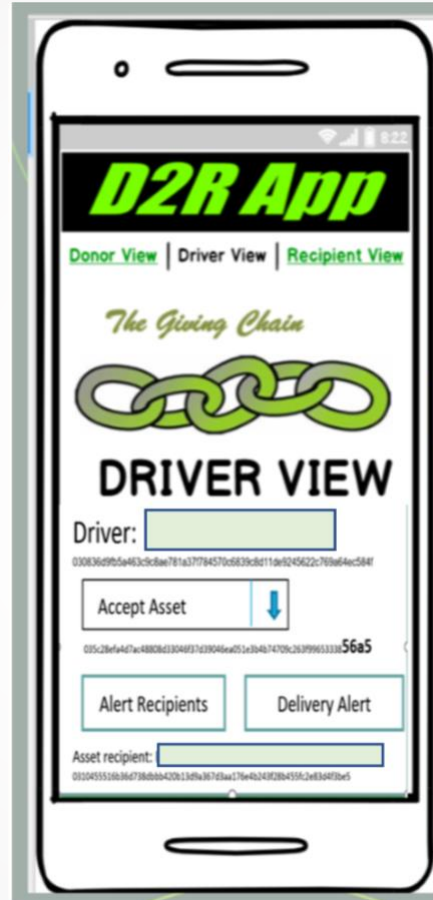
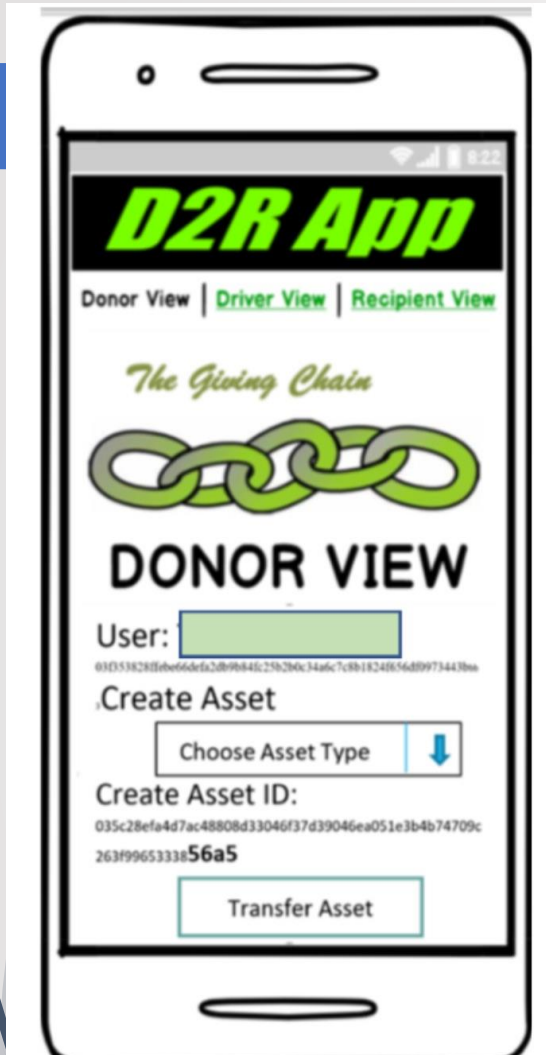
AYLUS –Alliance young leaders of the United State
Princeton Chapter www.aylus.org

Ledger Academy 5/17/2021



Gymnastics Unlimited Summer Giving Project

How does it work



Donor Blockchain - View

Unique Identifier for the Donor/holder who creates the asset. (****56a5)



Donation	Holder
Cereals and Pulses	030836d9fb5a463c9c8ae781a37f784570c6839c8d11de9245622c769a64ec584f
Canned Goods	030836d9fb5a463c9c8ae781a37f784570c6839c8d11de9245622c769a64ec584f

Donation is given a name with a unique identifier for the asset.



Donor Blockchain - Donation record

Donor named asset **Perishable items**



System associates a unique identifier ******|282**.
System alerts Driver of the asset (******|282**)



The screenshot shows a web browser window with the title 'Sawtooth Donor Chain'. The address bar shows 'localhost:8000'. The page header includes 'Sawtooth Donor Chain' and 'Donor Blockchain Application for Summer Project (Le...'. The main content area is divided into several sections:

- Select Holder:** A dropdown menu showing a long alphanumeric string: '035c28efa4d7ac48808d33046f37d39046ea051e3b4b74709c263f9965333856a5'.
- Create Donation Record:** A text input field containing 'Perishable items' and a blue 'Create' button below it.
- Transfer Donation:** A text input field containing a long alphanumeric string: '086d9fb5a3c9c8ae781a37f784570c6839c8d11de9245622c769agc5tdrl282', a dropdown menu labeled 'Select recipient...', and a blue 'Transfer' button below it.
- Accept Donation:** A section header at the bottom.
- Donation List:** A table on the right side of the page.

Donation	Holder
Cereals and Pulses	030836d9fb5a463c9c8ae781a37f784570c6
Canned Goods	030836d9fb5a463c9c8ae781a37f784570c6

Driver Blockchain - Transfer

Sawtooth Donor Chain *Donor Blockchain Application for Summer Project (Ledger Academy)*

Select Holder

035c28efa4d7ac48808d33046f37d39046ea051e3b4b74709c263f9965333856a5

Create Donation Record

Perishable items

Create

Transfer Donation

Perishable Item
086d9fb5a3c9c8ae781a37f784570c6839c8d11de9245622c769agc5tdrl282

Select recipient...
035c28efa4d7ac48808d33046f37d39046ea051e3b4b74709c263f9965333856a5
03f353828ffebe66defa2db9b84fc25b2b0c34a6c7c8b1824f656df0973443bbb3
030836d9fb5a463c9c8ae781a37f784570c6839c8d11de9245622c769a64ec584f

Accept Donation

Donation List

Donation	Holder
Perishable items	035c28efa4d7ac48808d33046f37d39046ea051e3b4b74709c263f9965333856a5
Cereals and Pulses	030836d9fb5a463c9c8ae781a37f784570c6839c8d11de9245622c769a64ec584f
Canned Goods	030836d9fb5a463c9c8ae781a37f784570c6839c8d11de9245622c769a64ec584f

Drivers are alerted asset **Perishable items (****|282)**

Driver Blockchain - Transfer

Unique Identifier for the Driver who accepts the donation

System alerts Recipients of the asset **Perishable Items** (****|282)

The screenshot shows a web browser window with the title 'Sawtooth Donor Chain' and the URL 'localhost:8000'. The page header includes 'Sawtooth Donor Chain' and 'Donor Blockchain Application for Summer Project (Ledger Academy)'. The main content area is divided into several sections:

- Select Holder:** A dropdown menu with the value '03f353828ffebe66defa2db9b84fc25b2b0c34a6c7c8b1824f656df0973443bbb3'.
- Create Donation Record:** A text input field containing 'Perishable items' and a blue 'Create' button.
- Transfer Donation:** A text input field containing '086d9fb5a3c9c8ae781a37f784570c6839c8d11de9245622c769agc5tdrl282', a dropdown menu with 'Select recipient...', and a blue 'Transfer' button.
- Accept Donation:** A text input field containing 'Perishable items', a blue 'Accept' button, and the text 'Reject'.
- Donation List:** A table with two columns: 'Donation' and 'Holder'. It lists three items: 'Perishable items', 'Cereals and Pulses', and 'Canned Goods', each with a corresponding holder ID.

Sawtooth Donor Chain Donor Blockchain Application for Summer Project (Ledger Academy)

Select Holder

Create Donation Record

Create

Transfer Donation

Transfer

Accept Donation

Donation List

Donation	Holder
Perishable items	03f353828ffebe66defa2db9b84fc25b2b0c34a6c7c8b1824f656df0973443bbb3
Cereals and Pulses	030836d9fb5a463c9c8ae781a37f784570c6839c8d11de9245622c769a64ec584f
Canned Goods	030836d9fb5a463c9c8ae781a37f784570c6839c8d11de9245622c769a64ec584f



System alerts Recipients of the asset (Perishable Items ****|282), first recipient to accept initiates driver's delivery.



The Interview

- During the interview please be sure to discuss the mentee's preference for working full time (40 hours from June to August)
 - or part time (20 hours a week from June to November).
- Evaluate not only your candidates technical preparedness but also the potential to grow and contribute (the soft skills).



Questions

1. Do you have any questions about the Giving Chain project and what the project GOAL is?
2. Do you have a preference to part time (20 hours a week from June to November). Or Full time (40 hours from June to August)
3. Describe what you feel the project must overcome
4. What does success look like for this project.





Bobbi Muscara
Ledger Academy, Director of Education
BCPrinceton, Board Member
Hyperledger, Chair, Learning Material Development Working Group



HYPERLEDGER

BLOCKCHAIN TECHNOLOGIES FOR BUSINESS

www.Hyperledger.org



www.LedgerAcademy.com

Ledger Academy 5/17/2021



www.BCPrinceton.com



Rooster
Featherstone US
Veteran



Jeannine Gorman
Executive Director

RECIPIENTS



609-865-8630
老朱



Ledger Academy 5/17/2021



Collection Days



Ledger Academy 5/17/2021



TELEPHONE

WORK. CREATE. ACCELERATE.



Ledger Academy 5/17/2021



Ledger Academy 5/17/2021



Ledger Academy 5/17/2021



Ledger Academy 5/17/2021



Ledger Academy 5/17/2021



Ledger Academy 5/17/2021





Ledger Academy 5/17/2021



Ledger Academy 5/17/2021



Ledger Academy 5/17/2021



Ledger Academy 5/17/2021



Ledger Academy 5/17/2021





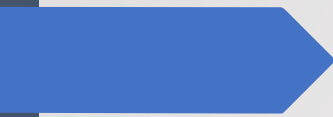
Ledger Academy 5/17/2021



Ledger Academy 5/17/2021



Ledger Academy 5/17/2021



Ledger Academy 5/17/2021



Ledger Academy 5/17/2021



The
Flemington
Area
**FOOD
PANTRY**

Thanks you for your donation

Pay It Forward